



CONTACT SHEET

January 2008

Editor, Janet Cartwright

Volume 30, No. 1

METRO CAMERA CLUB MEETING

The Metro Camera Club meets the second and fourth Monday of each month (except holidays) at the Will Rogers Garden Exhibition Building, Will Rogers Park, 3400 NW 36th Street, Oklahoma City, Oklahoma. Socializing starts at 7:00 pm. Meeting starts at 7:30 pm.

www.metrocameraclub.org

Useful tips for winter photography

Clothing

The two most important things to bear in mind for winter photography are comfort and safety. You can't work well if you are cold or wet. The secret of winter comfort is layering of clothing, and paying attention to the extremities.

Search the photo locations in advance

Snow makes traveling much more difficult. The more snow, the longer it will take you to move from one location to another. If you walk, it will take you twice or three times longer to cover the distance.

Never cover the distances alone

In winter, any obstacle is twice more difficult. A travel partner makes it easier to move ahead, traces are removed in turns, and in case of an accident - even a common one - your partner is the only one who can help you.

Hands ---Gloves are essential in cold weather, and you should wear a thin pair that enables you to set all the controls on the camera.

Head --Except in very cold weather, a soft thermal hat pulled down over your ears is enough to keep your head warm, with the hood from the jacket covering the camera in wet or windy conditions. Avoid hats with peaks that can get in the way when taking pictures.



This issue is a *Late Edition*. Sorry for the delays.

WELCOME NEW MEMBERS

Janetta Clark

and

Kathryn Hatcher

We hope Metro offers you programs, information and fellowship to further your interest and your enjoyment of photography.



At what time it is best to take photos

In winter, the sun is much lower in the sky. Thus, the light is good all day long especially uphill and in the mountains. However, dawn and dusk are the most spectacular moments of the day. The snow amplifies the warm chromatics of these moments.

Batteries or accumulators

They are quickly emptied because of the low temperatures. Make sure that you have exchangeable batteries on you. There is nothing more unpleasant than running out of batteries in front of white frosted subjects.

Filters

(cont. above)

In winter, UV filters are most employed at altitudes higher than 1000 m. But your photo case should also contain the polarizing filter and, eventually, an 81A warm up or skylight filter.

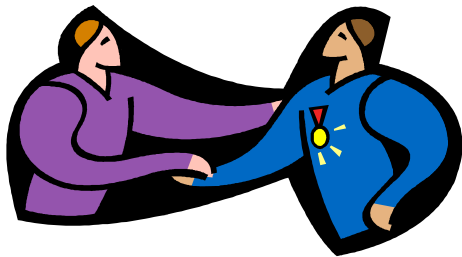
Condensation

It is one of the photography enemies in winter. When you enter a heated room, do not open your photo case immediately. In extremely cold weather, try to avoid breathing out directly on your camera when framing. Otherwise, you may find your camera covered with thin ice. At high temperatures, this turns into moisture and it may damage your camera.

full copyright, text&images

© www.digital-cameras-help.com

Congratulations to all the winners of 2007!

**Black and White A**

First Place-----James Heathcock

Second Place-----Randy Poe

Third Place-----Jim Robinson

Black and White AA

First Place-----Georgia Burrows_____

Black and White AAA

First Place-----Janet Steyer

Second Place-----Joe Spence

Third Place-----Janet Cartwright

Color A

First Place-----F. Piraino

Second Place-----Jim Robinson

Third Place-----James Dudley

Color AA

First Place-----Jim Allsman

Second Place----Chelsea Steyer

Third Place-----Joe Wilson

Color AAA

First Place-----Jackie Bartels

Second Place-----Joe Spence

Third Place-----James Heathcock

Color Slide A

First Place-----Peyton Osborne

Second Place---Carolyn Johnson

Third Place-----Bill Steyer

Color Slide AA

First Place-----Janet Steyer

Second Place-----Dennis Burian

Color Slide AAA

First Place-----Joe Spence

Second Place-----Joe Wilson

Third Place-----Jackie Bartels

Black and White PDI A

First Place-----Don Risi

Second Place-----Wayne Sroytr

Third Place-----Alta Sroytr

Color PDI A

First Place-----Don Risi

First Place-----Kathryn Grubbs

Third Place-----Charles Grubbs

FEBRUARY 11, 2008: James Pratt

James Pratt began photography when he and his wife traveled to the 1996 Olympics in Atlanta. He started with 35mm film and eventually moved to a Nikon F5 SLR, as well as a Mamiya RZ-67 medium format and a Toyo 4x5" view camera. While James processed all his own film, he was quick to adopt digital technology, first scanning his film for manipulation in Photoshop, then later moving to the Nikon D1 system. His extensive background in technology and computer networking made the transition to digital easy for him. He now shoots with a Nikon D3, D2x D40x, and occasionally with his 4x5 view camera.

In 2005 James made a personal commitment to do more off-camera lighting in his photography. Although he had owned studio lighting for several years, it

wasn't a part of his every day photography. As part of his personal commitment he started experimenting with light, using pocket wizards, various off-camera strobes and a variety of light modifiers. Starting with a single light, James spent a year practicing and learning how to control his off-camera lighting and use it in interesting ways to create dynamic pictures.

In October 2006 James decided to start publishing a magazine called Ride Oklahoma with his daughter Emily. James is the primary photographer for the magazine, shooting cover shots and magazine stories. Ride Oklahoma is distributed in Barnes & Noble, Borders, 7-11 stores, Hastings bookstores, and motorcycle dealers across the state. Because of the success of the magazine, he now stays busy with a variety of commercial photo projects, shooting advertising layouts, marketing materials, and environmental portraits.

James is going to show us how to enhance our lighting using a simple lighting system of speedlights, pocket wizards and light modifiers. Although James owns a studio full of lighting equipment, he often travels and photographs with a simple 2 light setup that most anyone can afford.

Thought for the day...

What you have is so much more than what you can touch or see. What you have is everything that is, and all that can ever be.

The Daily Motivator™ ©2008 Ralph S. Marston Jr. click [HERE](#) to read the rest of today's message

PROJECTED DIGITAL IMAGE RULES

I. Projected Digital Images

Projected Digital Images are traditional photographic images with only minimal manipulation such as dodging, burning, lightening, darkening, changing contrast and sharpening - basically the type of image enhancement you can do in a traditional analog darkroom. Color images converted to Black & White are permitted. Computer operations such as adding or removing objects, modifying selected areas, or otherwise affecting the truthful presentation of the subject are not permitted. Images should look as if they came right out of the camera with very little enhancement. The same image cannot be entered in more than one class.

II. Image Preparation

1. Dimensions:

Images should be no larger than 768 pixels on the longer dimension. Image size when saved should be approximately 500 kilobytes.

2. Color Space:

Images should be saved with the sRGB color space for best projection on the club's digital projector.

3. File Type:

All images should be saved as JPEG images, which is the file extension ".jpg". When saving, image file size should be approximately 500K, which usually equates to a quality of about 12 when saving in Photoshop. **NOTE: NO OTHER FILE TYPES WILL BE ACCEPTED!**

4. File Naming:

File naming will be important to get your file in the proper competition and category. All file names should be in **LOWER CASE ONLY**. Below is the format for file naming:

bw/color_class_lastnamefirstname_imagetitle.jpg

For a COLOR image in class "A" it would be:

c_a_lastnamefirstname_my_great_picture.jpg

For a Black & White image in class "A" it would be:

\$ METRO SPONSORS \$

Our sponsors are large contributors to our yearly budget and special events. Please support them when you can, and let them know we appreciate their support.

BAKER PHOTO & VIDEO
401 W Main
Yukon, OK 73099

EPPERSON PHOTO-VIDEO
3110 N. May Ave.
Oklahoma City, OK 73112

PHOTO FACTORY
4220 N. May Ave
Oklahoma City, OK 73118

**PIPKIN CAMERAS/
PHOTO PRODUCTS
REPAIR, INC.**
3109 N. Classen Blvd.
Oklahoma City, OK 73118

**TRUE COLOR PHOTO,
INC.**
710 W. Sheridan
Oklahoma City, OK 73102

Metro Camera Club - Officers, Directors, Committees - 2007

Officers:

President -----Tommy Evans
Vice-President – Wayne Srotyr
Secretary----- Dennis Burian
Treasurer-----Loy Riggs

Directors:

Competition ----- Janet Steyer
Membership ----- Bill Webster
& Publicity Jim Allsman
Field Trip----- Charles Grubbs
Contact Sheet ----Janet Cartwright

Committees:

Hospitality -----Chuck Emmerling
Program ----- Wayne Srotyr
Yearbook -----Jack DeLisle
Webmaster-----Jack DeLisle
Statistician ----- Jack DeLisle
Critique.....Joe Wilson