



April 2007

Editor, June Ranney

Volume 30, No 4

### METRO CAMERA CLUB MEETING

The Metro Camera Club meets the second and fourth Monday of each month (except holidays) at the Will Rogers Garden Exhibition Building, Will Rogers Park, 3400 NW 36<sup>th</sup> Street, Oklahoma City, Oklahoma. Socializing starts at 7:00 pm. Meeting starts at 7:30 pm.

[www.metrocameraclub.org](http://www.metrocameraclub.org)

#### COMING EVENTS

APRIL 9 –Program – Touring the New England States  
Joe Spence

APRIL 14 -- Field Trip – Azalea Festival, Muskogee

APRIL 23 – Competition

APRIL 28 – Field Trip – Wichita Mountains  
Wildlife Refuge

MAY 14 - The Art of Photography – James Walden

~~~~~

**MAY 30** - Regular Competition plus  
Projected Digital Images

#### **PLEASE NOTE:**

This is **Wednesday**. This is a change in date from the regular Monday meeting date because of the Memorial Day holiday when the Garden Center is closed.

JULY 9 - Viewpoint entries will be due. Continue taking shots until then.

#### WELCOME NEW MEMBERS

Bob DeLine  
Sherry & Katharine Kennedy  
Rick Wood  
Janet Woodmansee  
Brynn Ullrich

#### WELCOME VISITORS

Michael Carmack  
Lee & Dale Donlon  
Vicki Eckerd  
Susan Hunt  
Lindi Young

We hope Metro offers you programs and information to further your interest and enjoyment of photography.

#### VIEWPOINT

Subject: **REFLECTIONS!!!!**

Take lots of images, but only one entry will be allowed in each of the 5 Categories: B&W Print, Color Print, Color Slide, Projected Digital Image Color, and Projected Digital Image B&W

Regular Competition rules apply. Only new images taken after March 19, 2007 will be allowed. Submit entries on July 9, 2007. Members will pick the best images in each of the five categories.



## March 26th Competition Results

### Black & White

A No Entries

AA No Entries

### AAA

|     |    |            |                |
|-----|----|------------|----------------|
| 1st | 11 | Don Morris | Cross on High  |
| 1st | 11 | Joe Spence | Gorgeous Model |

### Color Prints

|          |    |                   |                        |
|----------|----|-------------------|------------------------|
| <u>A</u> |    |                   |                        |
| 1st      | 12 | Tracey Pruett     | Playing Dress Up       |
| 1st      | 12 | James P. Robinson | East Side "Honkies"    |
| 2nd      | 11 | Jim Dudley        | Ho Hum Days            |
| 2nd      | 11 | Larisa Reiswig    | Whatcha' Lookin' At!?! |
| 2nd      | 11 | Clarence Robinson | Aspen Gold             |
| 2nd      | 11 | Clarence Robinson | Majestic Scene         |
| 3rd      | 10 | Ken Biddle        | Evening Calm           |
| 3rd      | 10 | Carolyn Johnson   | Illuminations #1       |
| 3rd      | 10 | Carolyn Johnson   | Southwest Light #3     |
| 3rd      | 10 | Paul Johnson      | Nichols Hills Redbud   |
| 3rd      | 10 | James P. Robinson | Favorite Hiding Spot   |

### AA

|     |    |                 |                 |
|-----|----|-----------------|-----------------|
| 1st | 13 | Madelyn Allsman | The Beaver Pond |
| 2nd | 12 | David Nutter    | Eagle on Long   |
| 3rd | 11 | David Nutter    | Ready to Land   |

### AAA

|     |    |                |                      |
|-----|----|----------------|----------------------|
| 1st | 13 | Dennis Corbin  | Glades Mill          |
| 2nd | 12 | Jackie Bartels | Gazing Bobcat        |
| 2nd | 12 | Jackie Bartels | Racoon               |
| 2nd | 12 | Dennis Corbin  | Good Luck Kiss       |
| 3rd | 11 | Dennis Corbin  | Tiger Portraid       |
| 3rd | 11 | Joe Spence     | Standing for Liberty |

## MORE ABOUT COMPETITION

### COMPETITION KNOW HOW

With the large number of members and the relatively short meeting time, the Competition Committee is hard pressed to process entries for display before, during, and after judging.

Each member can be helpful in expediting the process. Won't you do your part? → → →

### Color Slides

#### A

|     |    |                |                 |
|-----|----|----------------|-----------------|
| 1st | 10 | Peyton Osborne | Old Fisherman   |
| 2nd | 9  | Peyton Osborne | Sealion Respite |
| 2nd | 9  | Peyton Osborne | Sundown at Sea  |

#### AA

|     |    |               |              |
|-----|----|---------------|--------------|
| 1st | 10 | Dennis Burian | Gears        |
| 2nd | 9  | Dennis Burian | The Done     |
| 3rd | 8  | Dennis Burian | Guthrie Mill |

#### AAA

|     |    |                |                    |
|-----|----|----------------|--------------------|
| 1st | 13 | Joe Spence     | Tall & Beautiful   |
| 1st | 13 | Joe Wilson     | Dew Points         |
| 2nd | 12 | Nellyne Hanlin | Tough Tree         |
| 3rd | 11 | Nellyne Hanlin | Magnificent Alaska |
| 3rd | 11 | June Ranney    | Dragon Lizard      |

#### Judges:

Chuck Emmerling, Charles Grubbs, Kathryn Grubbs

~ ~ ~ ~ ~ ~ ~

### Rotunda Gallery Display

On Competition evenings, judges choose five photographs prints taken within the Oklahoma City area. These are displayed in the Will Rogers Garden Exhibition Building Rotunda. Currently on display:

- |                           |                   |
|---------------------------|-------------------|
| 1. Gazing Bobcat          | Jackie Bartels    |
| 2. Raccoon                | Jackie Bartels    |
| 3. Playing Dress Up       | Tracey Pruett     |
| 4. Whatcha' Lookin' At!?! | Larisa Reiswig    |
| 5. Eastside "Honkies"     | James P. Robinson |

1. Read the Yearbook Pages pertaining to Competition.
2. Know your correct class in each category.
3. Learn to properly prepare required entry forms. Print information. Whenever possible prepare and submit Pre-Entry Forms – available on the club website.
4. On Competition Nights, please avoid congestion and unrelated conversation in the Competition Preparation Area. Prepare your entries and move along to other areas for pleasant fellowship with members.

## Metro Program April 9



### **JOE SPENCE** **TOURING THE NEW** **ENGLAND STATES**

Joe began his photography career and hobby seriously during 1978. During the time frame of 1981 through 1983 he taught photography at the Oklahoma City Community College as an adjunct teacher. He taught the basic courses, Photography I and II, plus darkroom. His best student was the late Bill Berryman, who later became an outstanding photographer.

He retired in 1996 as photographer for the Oklahoma Corrections. This was the same year that Joe joined the Metro Camera Club.

Joe has won numerous awards in various competitions. In addition he has assisted six members of the Metro Camera Club the basics in photography and Photoshop 7, Elements, and CS2, in their or his home. Typically, these were all at no charge to the student (s).

He and his wife, Judy, have recently returned from California photographing San Francisco, Sequoia and Yosemite National Parks and various coastline scenes using slide film for competition presentations. Joe takes his digital camera for making prints, using a quick release on the tripod to switch cameras. He is a firm believer in using the tripod and will stress this point to a new photographer.



Joe also cautions new members about the rule of the Metro Club concerning the slide and print images. Although the same scene, each must have a different view point.

He has photographed all the major National Parks in the U.S. of A. except Alaska. But that trip is planned for next year. Given the chance, Joe will bend anyone's ear about his favorite location, in Alberta, Canada.

Joe claims in his retirement planning, he could no longer shoot the Hassleblad Camera, so about five years ago, he purchased a digital camera and this caused a major change in his style of taking pictures. He still works diligently at getting the correct exposure, composition, lighting, and impact of his subject. The biggest difference in today's shooting is expense and the ability to see his "product" on the spot. He is an advocate of Photoshop CS2 and prints his images on Epson 1280. His choice of printers is because he can print an 11x17 in 360dpi instead of 1440. This is a savings of 2/3 rds of ink.

His teaching skills have not left Joe in his retirement. He is willing to assist anyone needing help in basic or advanced photography, Photoshop, and Elements.

Give Joe a call.

Joe plans to spend the initial part of his program showing the equipment he uses for his photography, perhaps with some of his hints and tips for skill improvement.

#### WORDS TO LIVE BY

Too much time spent searching for happiness leaves too little time to recognize it.

The man who does nothing but wait for his ship to come in has already missed the boat.

A filing cabinet is a place where you can lose something systematically.

# Field Trip #1 !!!

## Azalea Festival

### Muskogee, Oklahoma

**Saturday April 14<sup>th</sup>, 2007**

We will leave from the Will Roger's Garden Center at 6:30a.m. and carpool or caravan to Honor Heights Park in Muskogee, Oklahoma

*Practically all of the present azalea beds were planted and manicured in the 1950s and there are now over 30,000 with over 625 varieties.*

*Take I-40 east to US-69 then north on US-69 to Muskogee turn left (west) on West Okmulgee St. to Honor Heights Dr. then north to the park.*

*You will have to park where you can in the park.*

*We will eat at "Runt's Bar-B-Q 3003 W. Okmulgee St. in Muskogee around 11:00a.m.*

AAAAAAAAAAAAAAAAAAAAAAAAAAAAAAAAAAAAAAAAAAAAAAAAAAAAAAAAAAAAAAAAAAAAAAAA

# Field Trip #2!!!

## Wichita Mountains Wildlife Refuge

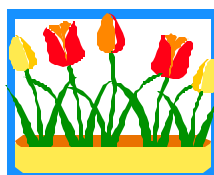
**Saturday April 28<sup>th</sup>, 2007**

We will leave from the Will Roger's Garden Center at 6:30a.m. and carpool or caravan to the refuge.

We will eat at the Meer's Restaurant in Meer's at around 11:00a.m.

**Questions??? Contact: Charles "Field Trip Guru" Grubbs Ph.405-831-3402 or E-mail me at [c.grubbs@cox.net](mailto:c.grubbs@cox.net)**

***Visitors are always welcome!!!***



## METRO CAMERA CLUB COMPETITION

Metro Camera Club has experienced rapid growth the past 3 years. We presently have 111 memberships, compared to 2003 memberships of 71.

The growth has put a tremendous burden on the Competition Committee.

At the last Board Meeting this subject was discussed at great length to try to find a solution. Hopefully one has been found. We are asking the members when possible to submit their competition entries via email to the Competition Chairman.

The following "COMPETITION PRE-ENTRY FORM" can be pulled up on the Metro web site, [metrocameraclub.org](http://metrocameraclub.org), under the COMPETITION BUTTON.

If you plan to enter Competition on Monday, April 23rd, Please fill out this form for each of your entries and Click on the Submit Button.

Entries must be submitted no later than 11:59 PM the Sunday before the regular Competition Night – which this month is Sunday, April 22nd.

If for some reason you don't feel comfortable doing this, or if you have no access to email or the internet, we will accept your entries at meetings as in the past. However this new Pre-Entry Form will allow much faster and easier processing of entries on Competition Night.

Please note: Completing the Pre-Entry Form does not eliminate the requirement to complete the usual standard Competition Entry forms as

in the past. However this new process will allow easier and faster processing of entries.

## Metro Camera Club Competition Pre-Entry Form

ENTER DATA FOR EACH OF YOUR COMPETITION ENTRIES FOR THE THREE CATEGORIES: BLACK & WHITE PRINT, COLOR PRINT AND COLOR SLIDE. THE DATA WILL BE ELECTRONICALLY FORWARDED TO THE COMPETITION CHAIRPERSON

NAME:

ENTRY TITLE:

**PLEASE SELECT THE CATEGORY FOR YOUR ENTRY:**

- BLACK & WHITE  
 **COLOR PRINT**  
 **COLOR SLIDE**

**PLEASE ENTER THE CLASS FOR YOUR ENTRY**

- A  
 AA  
 AAA

**CLICK THE "SUBMIT" BUTTON TO TRANSMIT YOUR ENTRY DATA TO THE COMPETITION CHAIRPERSON. TO CLEAR THE FORM AND MAKE CORRECTIONS WITHOUT SENDING THE DATA, CLICK ON THE "RESET" BUTTON.**

## DIGITAL COMPETITION

(Repeat Article)

As Metro Camera Club moves further into the digital world, members' patience is requested through the process, particularly in the initial stages of the new Class: **Projected Digital Images (PDI)**

The following guidelines are presented:

### **DIGITAL IMAGES**

"Digital" is defined as an image taken with a digital camera or converted to digital format by scanners or other means. Pictures produced from digital images by inkjet and laser printers, by image recorders or otherwise derived from a digital image shall be considered digital. Digital images may be entered as Color Prints, Monochrome Prints or Color Slides, as long as the subject has not been altered other than normal photographic steps such as crop, lighten and color balance. Computer operations such as adding or removing objects, modifying selected areas, or otherwise affecting the truthful presentation of the subject are not permitted.

### **I. Projected Digital Images**

Projected Digital Images (PDI) are traditional photographic images with only minimal manipulation such as dodging, burning, lightening, darkening, changing contrast and sharpening - basically the type of image enhancement you can do in a traditional analog darkroom. Color images converted to Black & White are permitted. Computer operations such as adding or removing objects, modifying selected areas, or otherwise affecting the truthful presentation of the subject are not permitted. Images should look as if they came right out of the camera with very little enhancement. The same image cannot be entered in more than one class.

### **II. Image Preparation**

#### **1. Dimensions:**

Images should be no larger than 768 pixels on the longer dimension. Image size when saved must be no larger than 400 kilobytes.

#### **2. Color Space:**

Images should be saved with the sRGB color space for best projection on the club's digital projector.

#### **3. File Type:**

All images should be saved as JPEG images, which is the file extension ".jpg". When saving, image file size should be no larger than 400K, which usually equates to a quality of about 10 when saving in Photoshop.

**NOTE: NO OTHER FILE TYPES WILL BE ACCEPTED!**

#### **4. File Naming:**

File naming will be important to get your file in the proper competition and category. Below is the format for file naming:

bw/color\_class\_lastnamefirstname\_imagetitle.jpg

For a COLOR image in class "A" it would be:

c\_a\_lastnamefirstname\_image title.jpg

For a Black & White image in class "A" it would be:

b\_a\_lastname\_image title.jpg

#### **5. Submission:**

Images to be submitted via email by midnight of the Wednesday before a Monday competition to:

**digitalcomp@metrocameraclub.org**

**No more than three images per category may be submitted**

**File naming is all lower case,  
Note underlines and no spaces**



***THE PHOTOGRAPHER'S PRAYER: If I should die, O Lord, please don't let my wife sell the camera equipment for what I told her it cost !***

*Submitted by Derrell Dover*

## WHY CAN'T I MANIPULATE MY COMPETITION ENTRIES???

Janet Steyer, Competition Chair

The Metro Camera Club wants you to be the best photographer you can be. There are many aspects to becoming a better photographer.

### COMPOSITION

You must find a good composition. Whether you set up a tabletop still life or go out on the road to shoot landscapes or nature, you must find a good composition.

### LIGHT

The composition may be right, but you also have to observe the light that falls on the composition. With the tabletop, you can bring the light to it, manipulate it, and make it exactly the way you want. In nature, however, you are at the mercy of the sun and the elements. How the light falls on your subject and how you perceive it is paramount to making an average photograph into an exceptional one.

### EQUIPMENT

Whether you use film or digital, the amount of money you spend on equipment is not as important as your knowledge of how to use it.

### LEARN

The more you know about the effects of different kinds of lenses, camera controls, & photography in general, the better equipped you are to make photographs that have good exposures and good compositions.

### PRECONCEPTION

As you learn more about composition & light, and your knowledge of camera equipment & controls like aperture, shutter speed, white balance, metering, etc. become second nature; you can turn your attention to seeing with the mind's eye. Once you begin to see a subject in terms of focus, depth of field, highlights & shadows, and all those other aspects of photography, you begin to preconceive your photograph. Before you take the photo, you ask yourself questions like:

How much depth of field do I want?

Do I want to use a polarizer?

Do I want to use other filters like graded or neutral density?

How do I blur the flow of the water in a river?

Should I use 100 ISO or 400 ISO?

The list goes on and on and on????

### EXPERIENCE

The Metro Camera Club is there to inspire you to take better photographs. We offer Field Trips to get you off the couch and out shooting with like-minded people who are willing to share their experience with you. We have Programs that will impart information you can use. We sponsor Workshops to further your education. We have some fun projects like the Viewpoint competition, the Treasure Hunt, and a new web gallery called Image quest that are designed to get your creative juices flowing. Our Monthly Competition inspires us to create quality photographs. The Critique at this competition is invaluable in helping us learn to grow in our knowledge. We all learn from our experience. Get out there, make some mistakes, and learn from them.

### PHOTOSHOP

As a professional, I have no hesitation doing whatever it takes in PhotoShop to create the photograph that my client wants to buy. The photograph is a product that's for sale. PhotoShop makes me a better designer, and I can turn out slicker photographs, but it does not make me a better photographer. Black & white or color negatives need some darkroom work in order to make a good print. A digital file is going to require some adjustments as well. Learn how to use editing software to bring out and enhance the information in your digital files so you can print a better photograph. We need to learn the difference between normal adjustments, enhancements, and manipulation. It is a slippery slope when we start relying on PhotoShop to correct errors and things that we just overlooked. It is easy to become complacent and lazy.

### SO, WHY CAN'T I MANIPULATE MY PHOTOS FOR COMPETITION???

**Because we want you to become a better photographer who can recognize when subject & light come together at just the right moment and you bring all your photographic skills to bear to capture that moment. We want to judge that photograph by the artistic & photographic techniques you use rather than on your computer skills.**

## February 26, 2007 Competition Results

### Black & White Print

|                 |                          |                 |
|-----------------|--------------------------|-----------------|
| <u>A</u>        |                          |                 |
| 1 <sup>st</sup> | 13 Baby Foot             | James Heathcock |
| 1 <sup>st</sup> | 13 Jaguar #2             | James Heathcock |
| 2 <sup>nd</sup> | 12 White Water Lily      | Randy Poe       |
| 3 <sup>rd</sup> | 11 Magnolia #1           | Randy Poe       |
| 3 <sup>rd</sup> | 11 Keeping An Eye On You | Dennis Burian   |

### AA

|                 |                 |                 |
|-----------------|-----------------|-----------------|
| 1 <sup>st</sup> | 10 Old Windmill | Georgia Burrows |
|-----------------|-----------------|-----------------|

### AAA

|                 |                            |                  |
|-----------------|----------------------------|------------------|
| 1 <sup>st</sup> | 10 Reflecting On A Rose #2 | Janet Cartwright |
| 1 <sup>st</sup> | 10 Jag At Rest             | Joe Spence       |
| 2 <sup>nd</sup> | 9 Pretty Lady In The Park  | Joe Spence       |
| 2 <sup>nd</sup> | 9 Reflecting On A Rose     | Janet Cartwright |

### Color Print

#### A

|                 |                              |                |
|-----------------|------------------------------|----------------|
| 1 <sup>st</sup> | 13 Wet & Wild                | Danny Corn     |
| 2 <sup>nd</sup> | 12 Courtney                  | Danny Corn     |
| 2 <sup>nd</sup> | 12 Drive By Shooting In Blue | James Robinson |
| 3 <sup>rd</sup> | 11 Rose Of Sharon            | Paul Johnson   |
| 3 <sup>rd</sup> | 11 Morning Mist              | James Robinson |

#### AA

|                 |                              |             |
|-----------------|------------------------------|-------------|
| 1 <sup>st</sup> | 14 Cat Got His Tongue        | Don Risi    |
| 2 <sup>nd</sup> | 12 Can You Hear Me Now?      | Jim Allsman |
| 2 <sup>nd</sup> | 12 Windmill, Barn Sun In Red | Don Risi    |
| 3 <sup>rd</sup> | 11 They Are Ears Not Wings   | Jim Allsman |

#### AAA

|                 |                         |                  |
|-----------------|-------------------------|------------------|
| 1 <sup>st</sup> | 13 Roses And Tonic      | James Heathcock  |
| 1 <sup>st</sup> | 13 Red On Rose          | James Heathcock  |
| 2 <sup>nd</sup> | 12 Patriotic Colors     | Joe Spence       |
| 2 <sup>nd</sup> | 12 Caracal Portrait     | Jackie Bartels   |
| 2 <sup>nd</sup> | 12 Yellowstone Falls    | Dennis Corbin    |
| 2 <sup>nd</sup> | 12 Cardinal In The Snow | Jackie Bartels   |
| 2 <sup>nd</sup> | 12 Tiger                | Dennis Corbin    |
| 3 <sup>rd</sup> | 11 Rose & Tonics        | James Heathcock  |
| 3 <sup>rd</sup> | 11 Sherrie              | Dennis Corbin    |
| 3 <sup>rd</sup> | 11 Peach Orchids        | Joe Spence       |
| 3 <sup>rd</sup> | 11 Hugs & Kisses        | Janet Cartwright |

### Color Slides

#### A

|                 |                           |                 |
|-----------------|---------------------------|-----------------|
| 1 <sup>st</sup> | 11 Bridge On The Dordogne | Carolyn Johnson |
| 2 <sup>nd</sup> | 10 Light Steps            | Carolyn Johnson |
| 3 <sup>rd</sup> | 9 Canadian Outpost        | Peyton Osborne  |
| 3 <sup>rd</sup> | 9 Holiday                 | Ken Biddle      |

### Color Slides, Continued

#### A

|                 |                            |                 |
|-----------------|----------------------------|-----------------|
| 3 <sup>rd</sup> | 9 Fallen Totem             | Peyton Osborne  |
| 3 <sup>rd</sup> | 9 Harbor Floor Reflections | Peyton Osborne  |
| 3 <sup>rd</sup> | 9 Shutter Shade            | Carolyn Johnson |

#### AA

|                 |                      |               |
|-----------------|----------------------|---------------|
| 1 <sup>st</sup> | 12 Placid            | Dennis Burian |
| 2 <sup>nd</sup> | 11 Canoes            | Dennis Burian |
| 3 <sup>rd</sup> | 9 Barn In The Valley | Dennis Burian |

#### AAA

|                 |                                 |                |
|-----------------|---------------------------------|----------------|
| 1 <sup>st</sup> | 12 Pink And Blue Evening        | Joe Wilson     |
| 1 <sup>st</sup> | 12 Old Growth Forest            | Joe Spence     |
| 1 <sup>st</sup> | 12 Maine Lighthouse             | Joe Spence     |
| 2 <sup>nd</sup> | 11 Gold On Black Velvet         | Jackie Bartels |
| 3 <sup>rd</sup> | 10 Yarn Hugger                  | Jackie Bartels |
| 3 <sup>rd</sup> | 10 Star Trail Searcher          | Charles Grubbs |
| 3 <sup>rd</sup> | 10 Blue Chihuly Glass           | Randy Poe      |
| 3 <sup>rd</sup> | 10 Archway #2                   | Wayne Hughes   |
| 3 <sup>rd</sup> | 10 San Francisco Diocese Church | Bill Webster   |

### PDI Black & White

#### A

|                 |                          |                  |
|-----------------|--------------------------|------------------|
| 1 <sup>st</sup> | 12 Looking Out           | Janet Cartwright |
| 1 <sup>st</sup> | 12 Fox Kit               | Janet Cartwright |
| 2 <sup>nd</sup> | 11 The Barn              | Bill Webster     |
| 2 <sup>nd</sup> | 11 Winter Sunset         | Don Risi         |
| 2 <sup>nd</sup> | 11 Cavalry At Peace      | Charles Grubbs   |
| 3 <sup>rd</sup> | 10 Patterns In Brick     | Randy Poe        |
| 3 <sup>rd</sup> | 10 In The Beginning      | Randy Poe        |
| 3 <sup>rd</sup> | 10 Poker Face            | Charles Grubbs   |
| 3 <sup>rd</sup> | 10 Baja Beach Reflection | Wayne Srotyr     |

### PDI Color

#### A

|                 |                               |                |
|-----------------|-------------------------------|----------------|
| 1 <sup>st</sup> | 13 Bzzz Off                   | Charles Grubbs |
| 2 <sup>nd</sup> | 12 Jonathon Livingston        | Paul Johnson   |
| 2 <sup>nd</sup> | 12 Bluegrass #1               | Rick Akers     |
| 2 <sup>nd</sup> | 12 Silhouette At Sunset       | Charles Grubbs |
| 2 <sup>nd</sup> | 12 TeePees In Mountain Meadow | Peyton Osborne |
| 2 <sup>nd</sup> | 12 Heart Of The Rose          | Kathryn Grubbs |
| 2 <sup>nd</sup> | 12 Autumn On The Buffalo      | Charles Grubbs |
| 2 <sup>nd</sup> | 12 Dew Kist                   | Kathryn Grubbs |
| 2 <sup>nd</sup> | 12 You Pick Your Left Foot Up | Alta Srotyr    |
| 3 <sup>rd</sup> | 11 Single Lorakeet            | Randy Poe      |
| 3 <sup>rd</sup> | 11 Lost Lake                  | Peyton Osborne |
| 3 <sup>rd</sup> | 11 Mexican Lily               | Alta Sroytr    |
| 3 <sup>rd</sup> | 11 Red Rock Reflection        | Joe Wilson     |
| 3 <sup>rd</sup> | 11 Moon Over OKC #29          | Don Risi       |

# International Photography Hall of Fame & Museum

Presents

## *Eyes of the Storm: A Community Survives after Katrina*

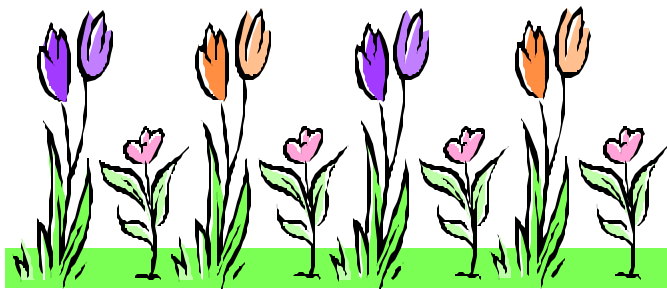
An exhibition of photographs and poetry  
by middle-school students.

Exhibiting March 9 through May 31,  
2007

IPHF Hall Gallery · Omniplex

IPHF at Omniplex  
2100 NE 52<sup>nd</sup> St, Oklahoma City

For more information, contact IPHF  
at 405.424.4055



### \$ METRO SPONSORS \$

Our sponsors are large contributors to our yearly budget and special events. Please support them when you can, and let them know we do appreciate their support.

#### BAKER PHOTO & VIDEO

401 W Main  
Yukon, OK 73099

#### EPPERSON PHOTO-VIDEO

3110 N. May Ave.  
Oklahoma City, OK 73112

#### PHOTO FACTORY

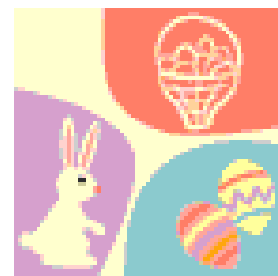
4220 N. May Ave  
Oklahoma City, OK 73118

#### PHOTO PRODUCTS REPAIR, INC.

3109 N. Classen Blvd.  
Oklahoma City, OK 73118

#### TRUE COLOR PHOTO, INC.

710 W. Sheridan  
Oklahoma City, OK 73102



### Metro Camera Club - Officers, Directors, Committees - 2007

#### Officers:

President -----Tommy Evans  
Vice-President – Wayne Srotyr  
Secretary----- Dennis Burian  
Treasurer-----Loy Riggs

#### Directors:

Competition ----- Janet Steyer  
Membership ---- Bill Webster  
& Publicity Jim Allsman  
Field Trip----- Charles Grubbs  
Contact Sheet ----June Ranney

#### Committees:

Hospitality -----Chuck Emmerling  
Program ----- Wayne Srotyr  
Yearbook -----Jack DeLisle  
Webmaster-----Jack DeLisle  
Statistician ----- Jack DeLisle  
Critique.....Joe Wilson